

# Call for registration of doctoral dissertations with the Tottori University Research Result Repository

“What is a “repository”?”

A “repository” is a collection of primary works of research (such as theses and other documents) that is created and presented by the members of a university or other research institution. The repository serves an **archive** and **storage** function for primary works and as a showcase for **disseminating** these works (free of charge) over the Internet.

## Benefits of registering...

- The repository provides an opportunity and means for people outside the university to access your research work, thereby **increasing the chances that your work will be viewed and cited**. In particular, since doctoral dissertations are normally not published and distributed like other publications, they cannot be copied in full unless the author grants consent in accordance with copyright law. Thus, for people outside the university, doctoral dissertations are one of the most difficult types of documents to access.

---

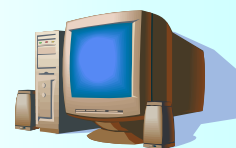
## Registration procedure (outline)

Researcher

1. Documents to be registered are sent to the Library along with a completed “Consent for Inclusion” (as email attachments or on CD-ROM or other media)  
(Generally, the rest of the process is handled by the Library.)



2. Metadata (e.g., bibliography) is created.
3. The work is registered in the repository and made public.



- **If the work has been (or is expected to be) published as a book or in a journal, or if the work involves (or is expected to involve) a patent**, release to the public may be delayed or forgone entirely. Please feel free to discuss these considerations, if necessary.

---

Tottori University Research Result Repository

<http://repository.lib.tottori-u.ac.jp/Repository/Index.e>

Inquiries: Library & Information Science Division, Science Information Section

Tel: 0857-31-5673 ext: 7060

E-mail: [ac-gakuju@adm.tottori-u.ac.jp](mailto:ac-gakuju@adm.tottori-u.ac.jp)