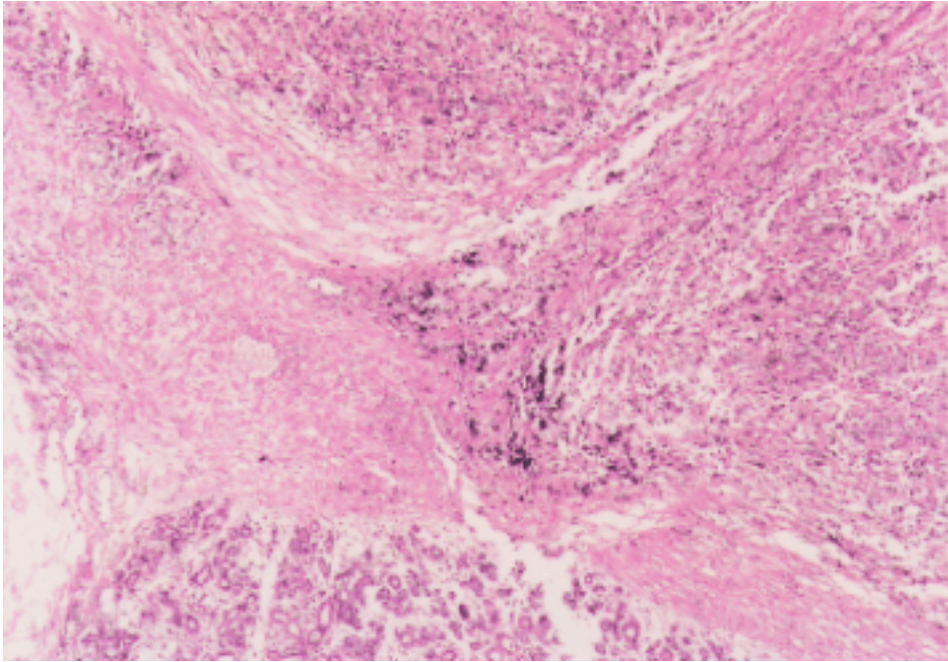
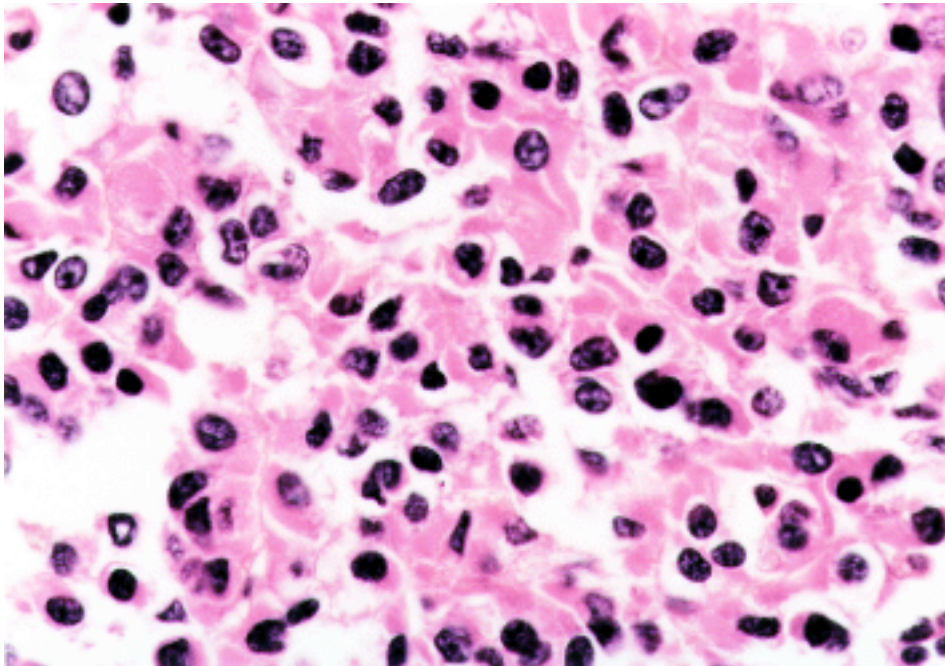


Malignant oncocytoma of the parotid gland



**Fig. 2.** The tumor cells show a solid, trabecular or alveolar pattern. Hematoxylin and eosin,  $\times 40$ .



**Fig. 3.** Nuclei of the tumor cells are uniform in size and cytoplasm showing eosinophilia. Hematoxylin and eosin,  $\times 400$ .