

incisor and canine region and in the alveolar mucosa of the incisor region. They measured 10 to 30 μm in diameter. They were most frequently observed in the attached gingiva and alveolar mucosa of the incisor region (40–50/ mm^2) (Figs. 3a and b).

Connective tissue papillae in the lower jaw

In the lower jaw, the general morphological features of the connective tissue papillae were almost the same as those in the upper jaw.

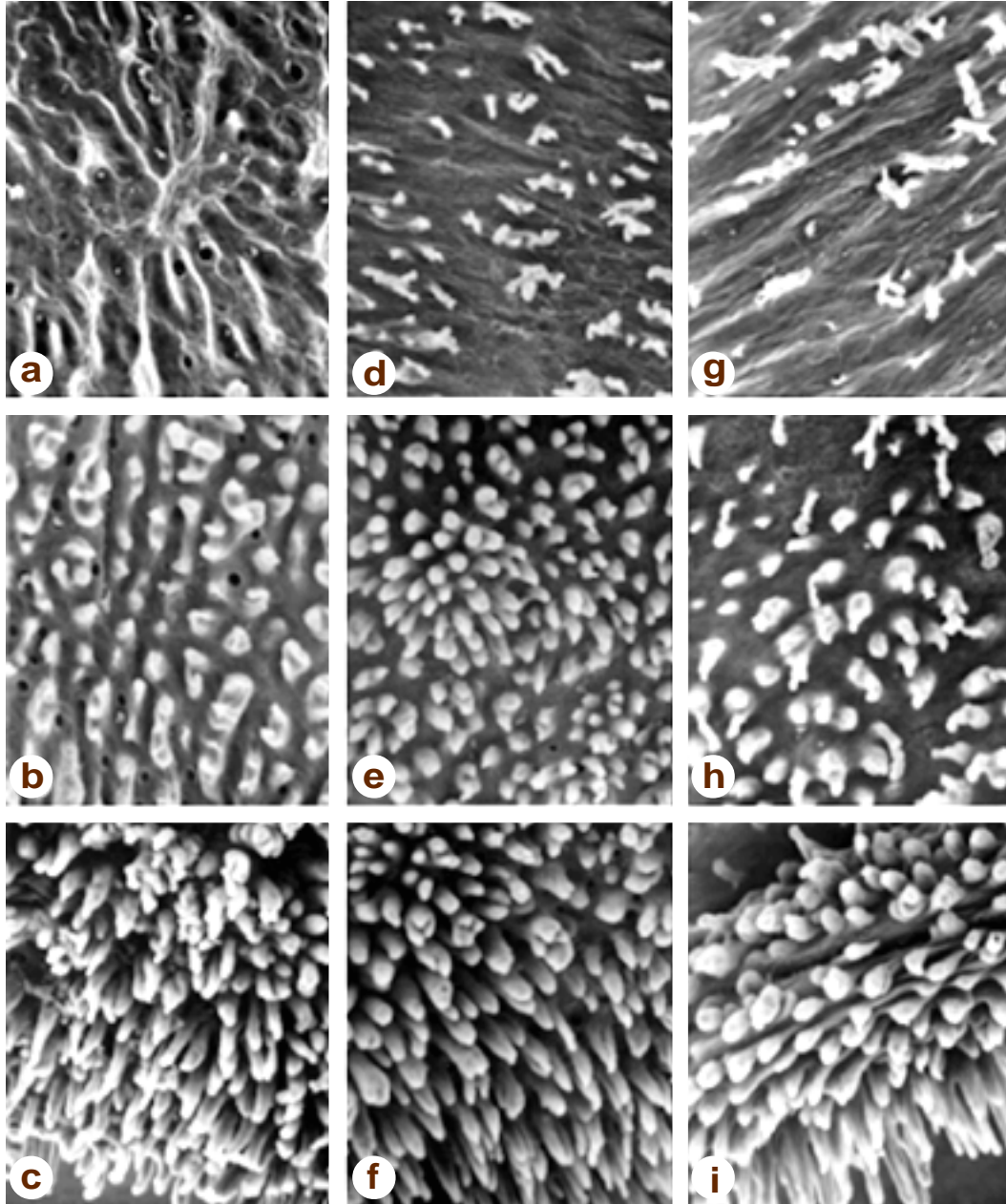


Fig. 3. Connective tissue papillae of the gingiva of the upper jaw prepared by the NaOH maceration method. **a–c:** incisor region, **d–f:** canine region, **g–i:** molar region. **a, d, g:** alveolar mucosa, **b, e, h:** attached gingiva, **c, f, i:** free gingiva. **a–i:** $\times 60$.