

Tottori University Research Result Repository

(Web: <http://repository.lib.tottori-u.ac.jp/Repository/Index.e>)

Explanation for Contributors

December 2008

Library & Information Science Division, Academic Information Department,
Tottori University

What is a “repository”?

A “repository” is a collection of primary works of research (such as theses and other documents) that is created and presented by the members of a university or other research institution. The repository serves an **archive** and **storage** function for primary works and as a showcase for **disseminating** these works (free of charge) over the Internet. Although a relatively new means of distributing scientific information, repositories have become more and more widely used around the world in recent years.

It will become easier to understand “what kind of research Tottori University is engaged in”.



Benefits for Tottori University...

- The University is able to better fulfill its duty, as a national university, to explain its activities.
- The University gains more exposure as a research and education institution.
- Opportunities for joint research with other institutes and for industry-academia collaboration are enhanced

Benefits for researchers...

- Opportunity and means for making research results public, thereby **increasing the chances that your work will be viewed and cited.**



Registration procedure (outline)

Researcher

1. Documents to be registered are sent to the Library along with a completed “Consent for Inclusion”

(as email attachments or on CD-ROM or other media)

(Generally, the rest of the process is handled by the Library.)

2. Metadata (e.g., bibliography) is created.
3. Copyright is checked.
4. The work is registered in the repository and made public.



Documents that can be registered in the repository

Proceedings, COE-related materials, research expense reports, dissertations written for the completion of academic degrees, local resources, papers published in academic journals, books (chapters, sections), educational materials, presentation slides, and empirical data

Are there any issues related to copyright?

Copyright will be handled according to the terms of submission target or publishing contract.

- If the author holds the copyright

→Registration requires consent of the author (or all co-authors in the case of multiple authorship)

- If the publishing body (publisher/academic society) holds copyright

→Registration requires consent of the publishing body, but many overseas publishers (e.g., Elsevier, Springer, and NPG) allow material to be made public through repositories, subject to some conditions (e.g., restriction to preprints (before peer review), restriction to manuscripts before editing/correction, allowing registration only after a specified length of time after release by the publisher). (Checking and other necessary copyright-related procedures are handled by the Library.)

➤If consent cannot be obtained, the document cannot be made public, even if requested.

➤In some cases related to patents or other rights or licensing issues, it may be best to delay or forgo making the work public.



Current state of repositories at other institutions

In Japan: As of December 2008, there were 88 repositories (66 at national universities; repositories are now fully established at four other universities in the Chugoku region) (from the web site of the NII Institutional Repositories Program, <http://www.nii.ac.jp/irp/list/>)

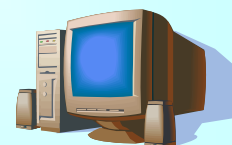
Recent topic: Commencement of linking from the bibliographical database CiNii to individual depositories.

Outside Japan: In the Directory of Open Access Repositories (*OpenDOAR*) alone, there are now more than 1,000 registered repositories. In addition institutions in the United States and Europe, repositories are also being added from Central and South America (e.g., Brazil, Peru) and Asia (e.g., India, Korea).

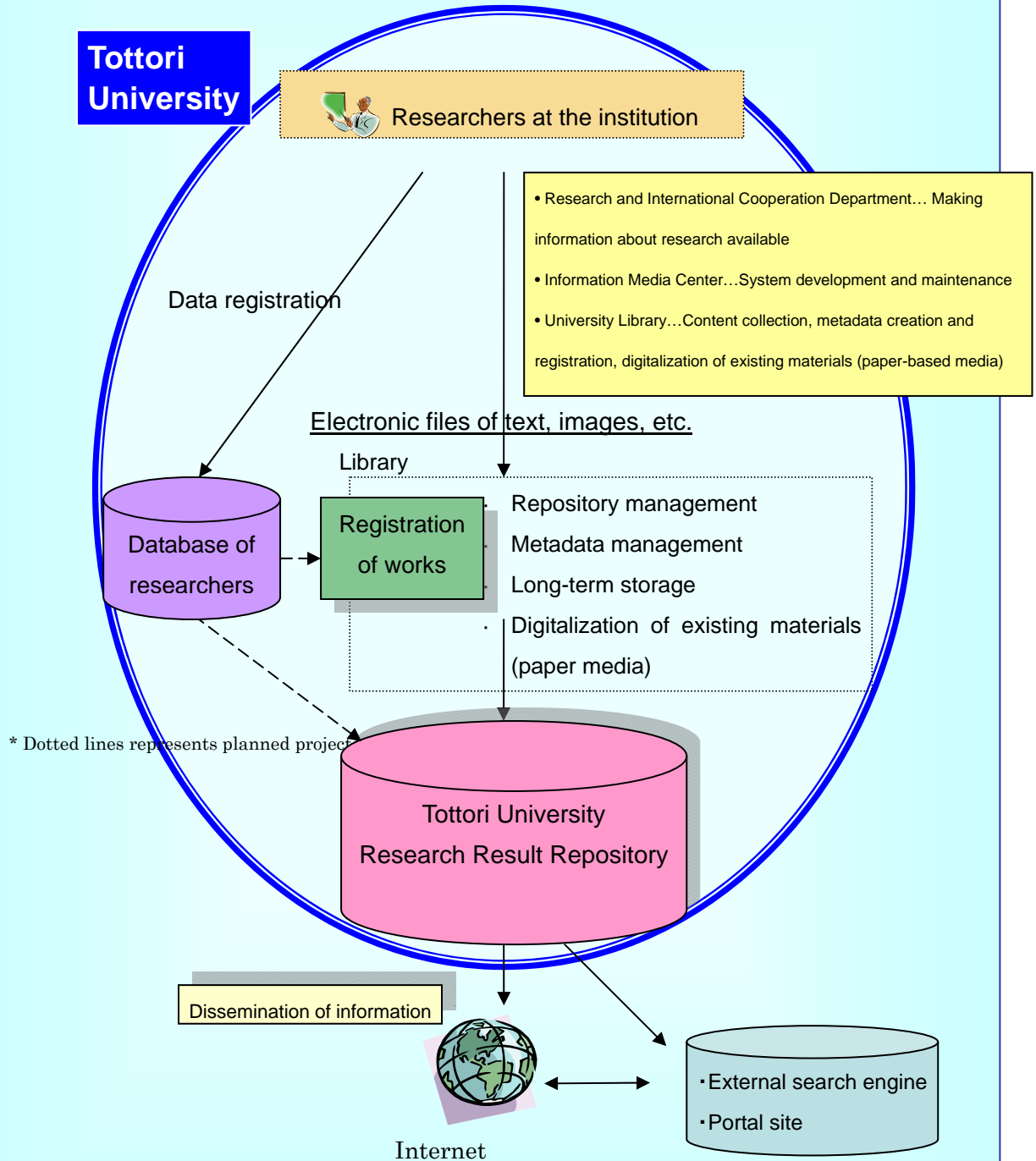


Related sites

- JAIRO (<http://jairo.nii.ac.jp/>) (cross search: Japan)
- OAIster (<http://www.oaister.org/>) (cross search: overseas)
- Scpj (<http://www.tulips.tsukuba.ac.jp/scpi/>) (copyright policy search: Japan)
- SHERPA/RoMEO (<http://www.sherpa.ac.uk/romeo.php>) (copyright policy search: overseas)
- *OpenDOAR* (<http://www.opendoar.org/>) (repositories list/search)



Schematic of the Tottori University Research Result Repository System



Inquiries: Library & Information Science Division, Science Information Section

Tel: 0857-31-5673 ext: 7060

E-mail: ac-gakuju@adm.tottori-u.ac.jp